

NATURAL MODERN MIX COLLECTION

# SEQUENCE

SEQUENCE

# SEQUENCE SWATCH

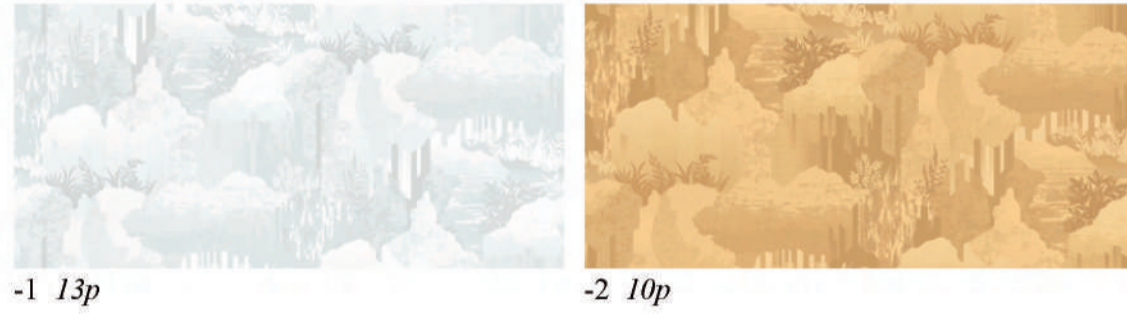
88567 Dewil



88560 Timberwood



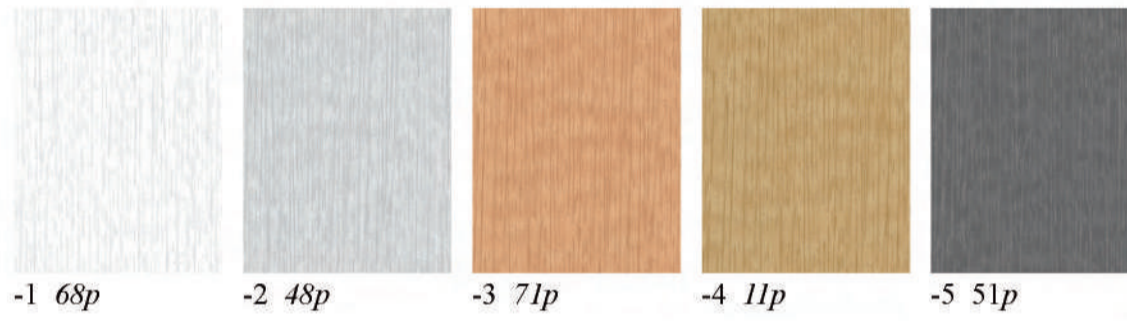
88566 Foresta



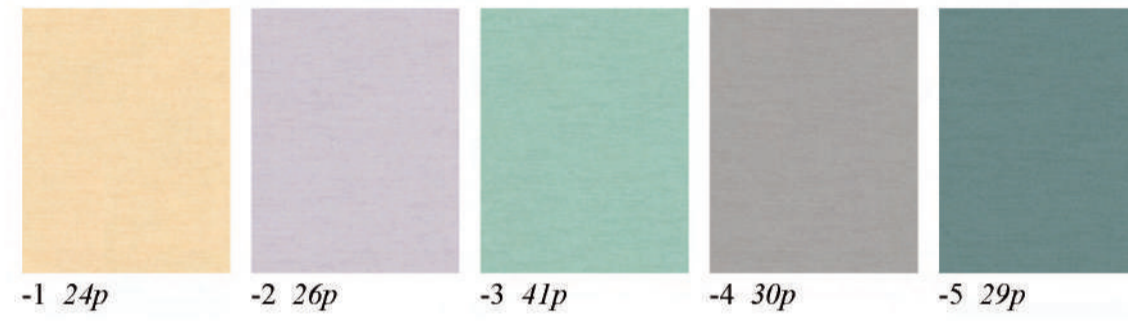
88559 Floria



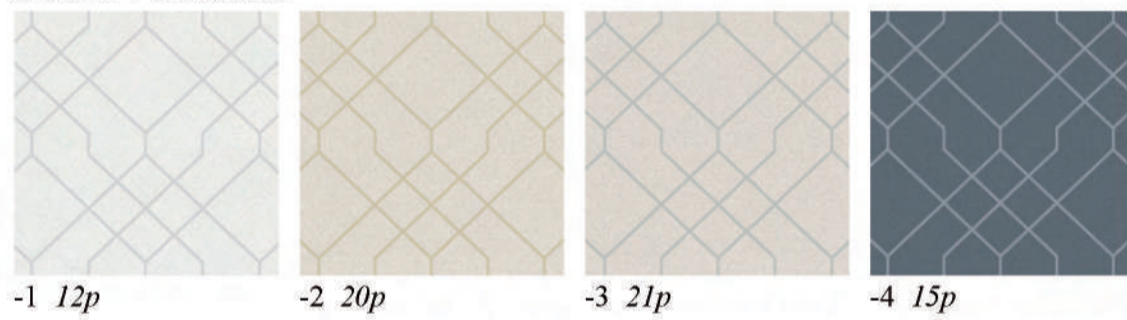
88565 Lani



88558 Yann



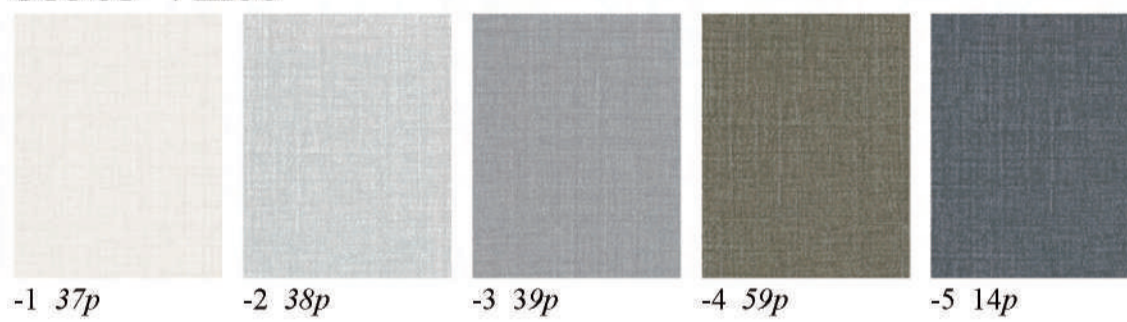
88564 Dandi



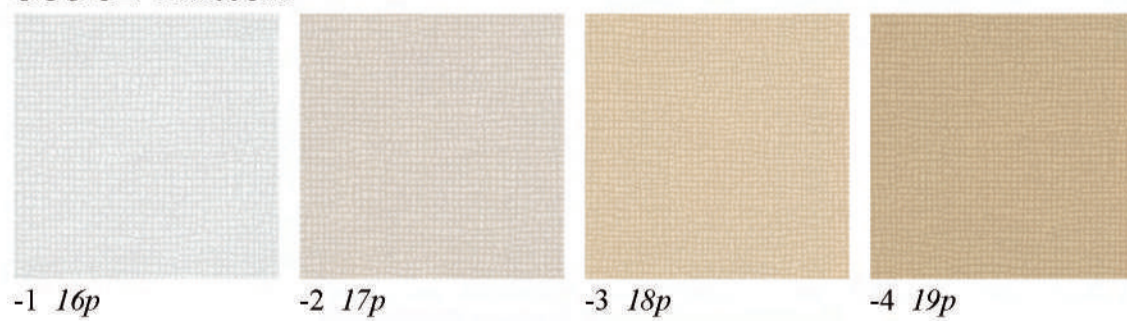
88557 Tia



88563 Vince



88562 Kitten



88561 Scotch



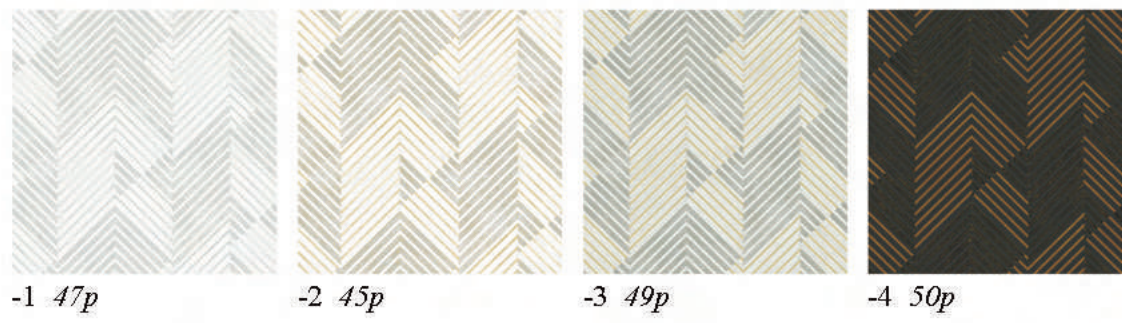
88556 Latina



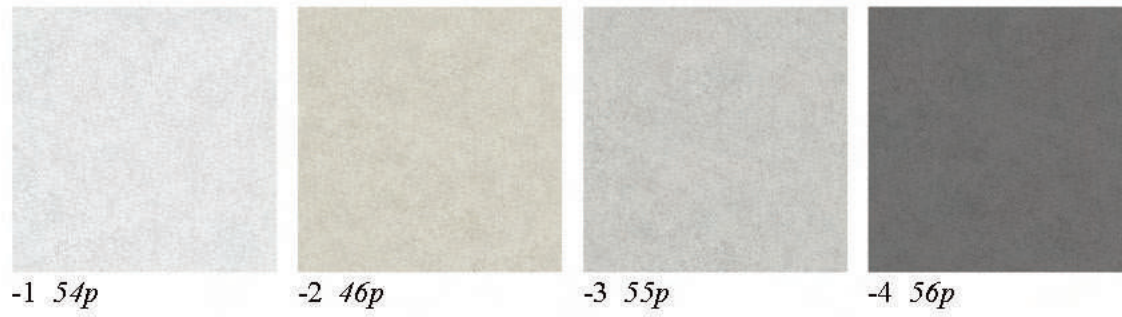
88555 Zig



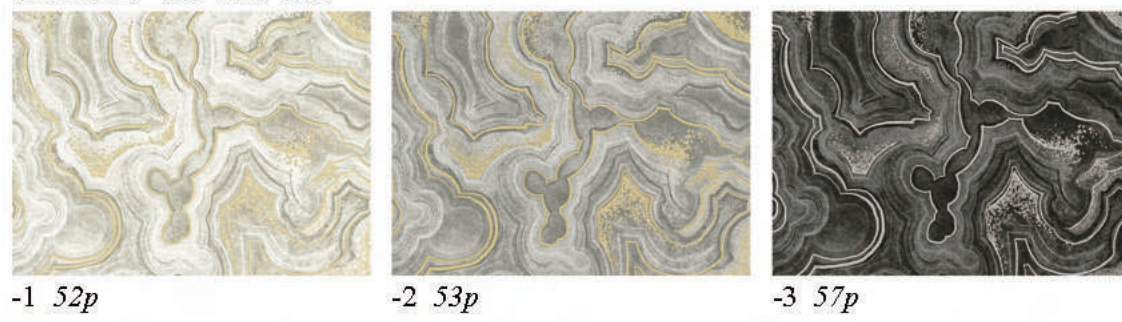
88554 Geisel



88553 Tess



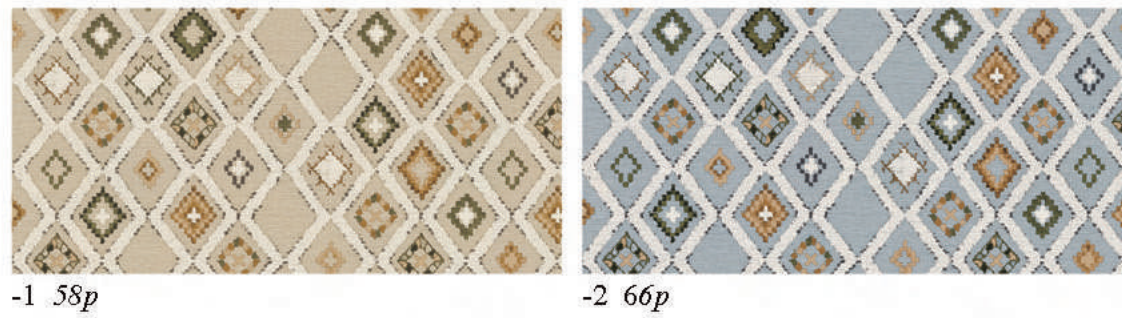
88552 Towood



88551 Rou



88550 Boheme



88549 Couvreur



88548 Benjerry



88547 Danube



**SEQUENCE COLLECTION**  
shinhan wallcoverings

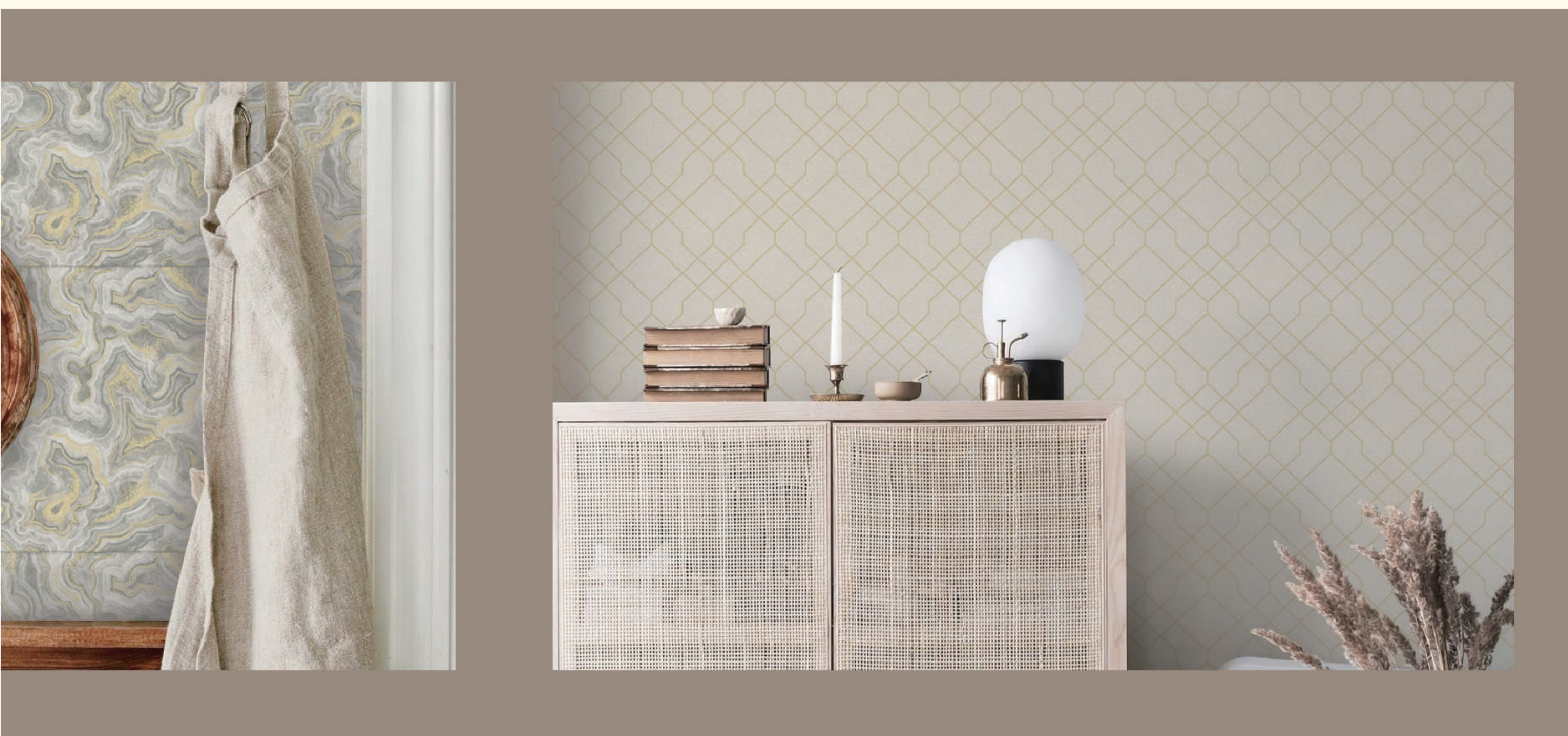
# SEQUENCE



NEW COLLECTION

# *collection*

---



SHINHAN WALLCOVERINGS

We are constantly changing to create a beautiful living space for our customers.



*Vince* 88563-2



*Danube* 88547-1



*Dewil* 88567-2





*Sequence*

*We are constantly changing to create a beautiful living space for you. NATURAL STYLE*



Rou · 88551-1



Rou · 88551-2



Scotch · 88561-3

SEQUENCE  
COLLECTION

*Dewil* 88567-2







Dewil · 88567-3

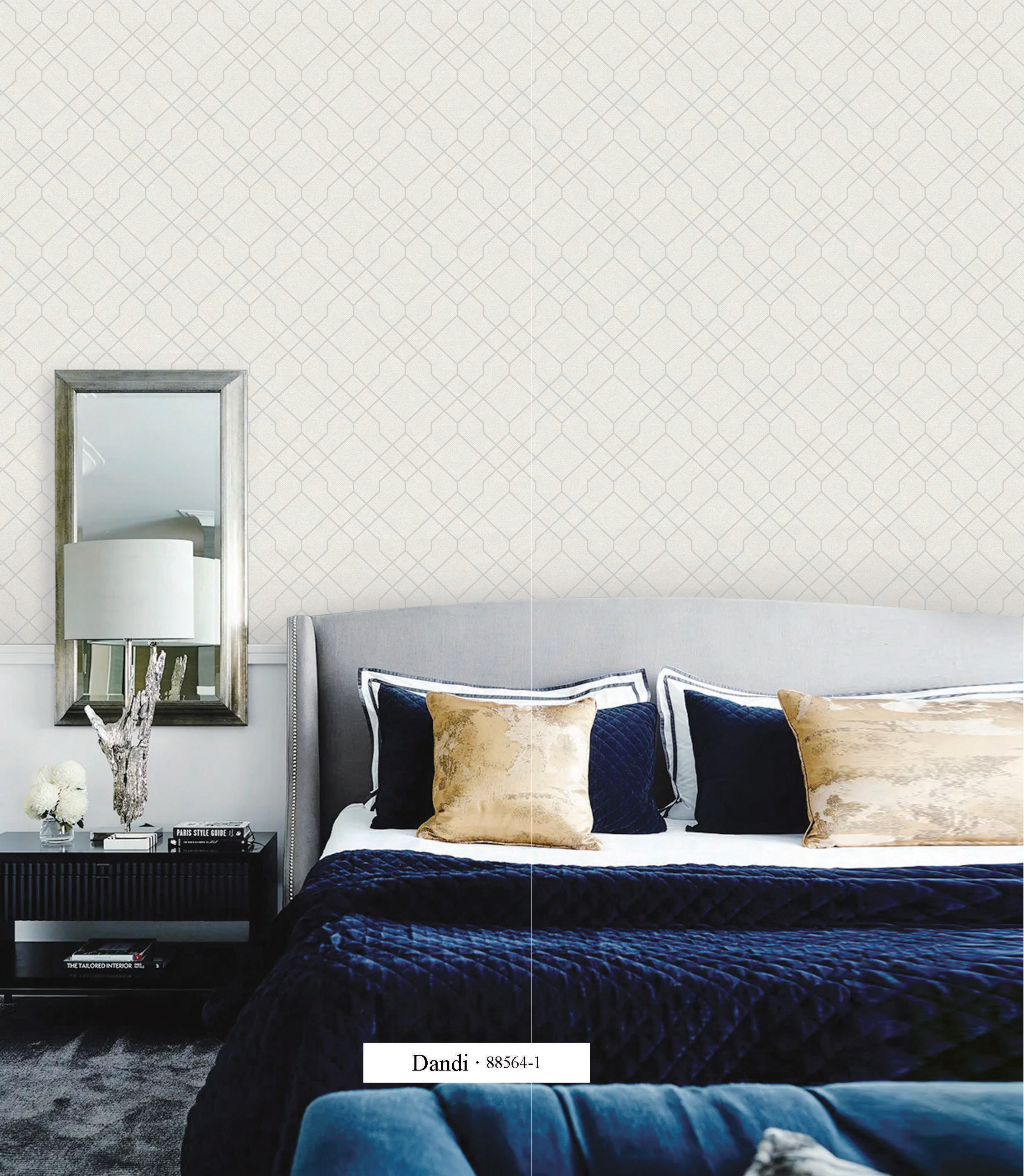




Foresta • 88566-2



Lani · 88565-4



Dandi · 88564-1



Vince · 88563-5



Kitten · 88562-1



Kitten · 88562-2



Dandi · 88564-2

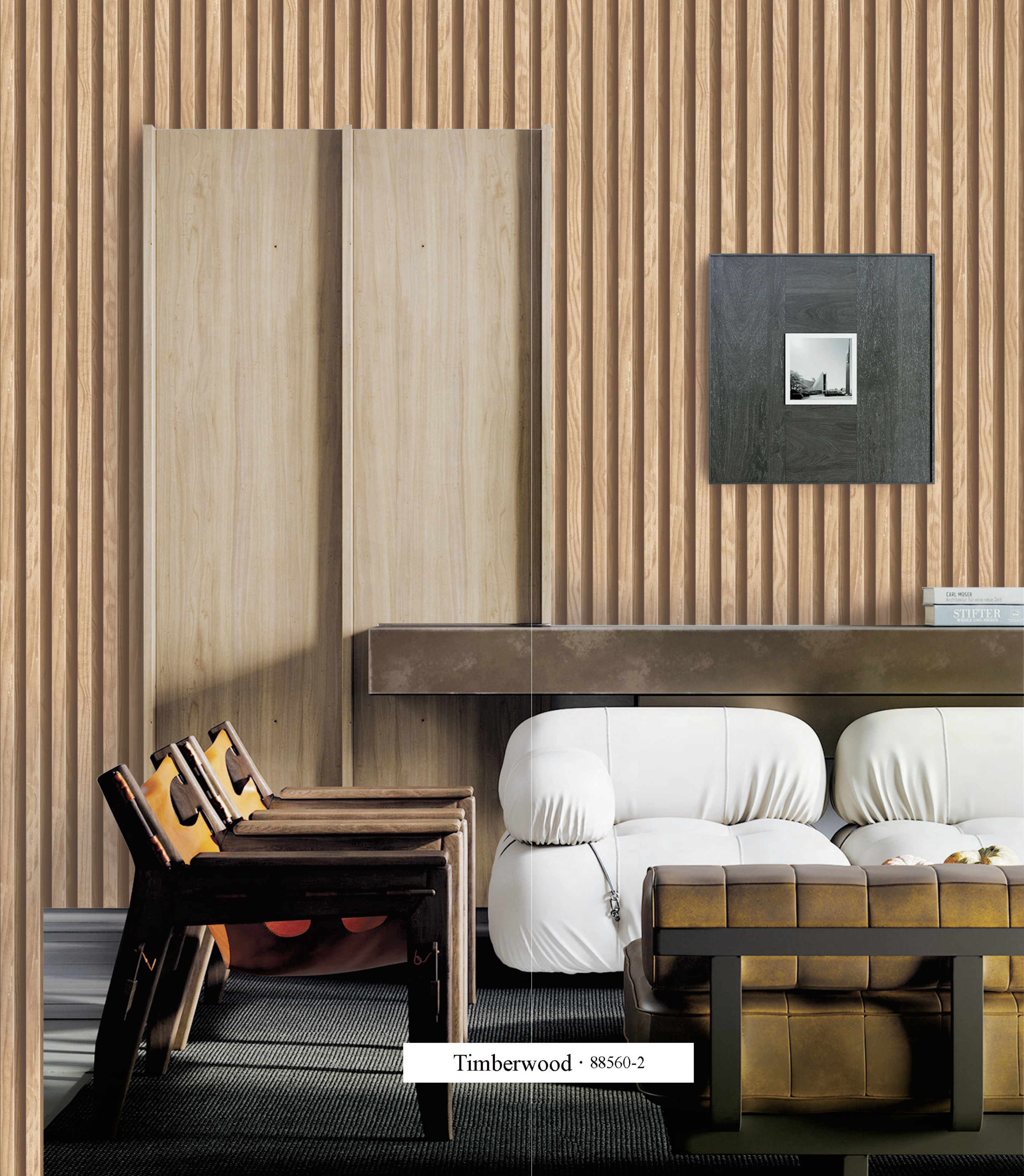


Dandi · 88564-3



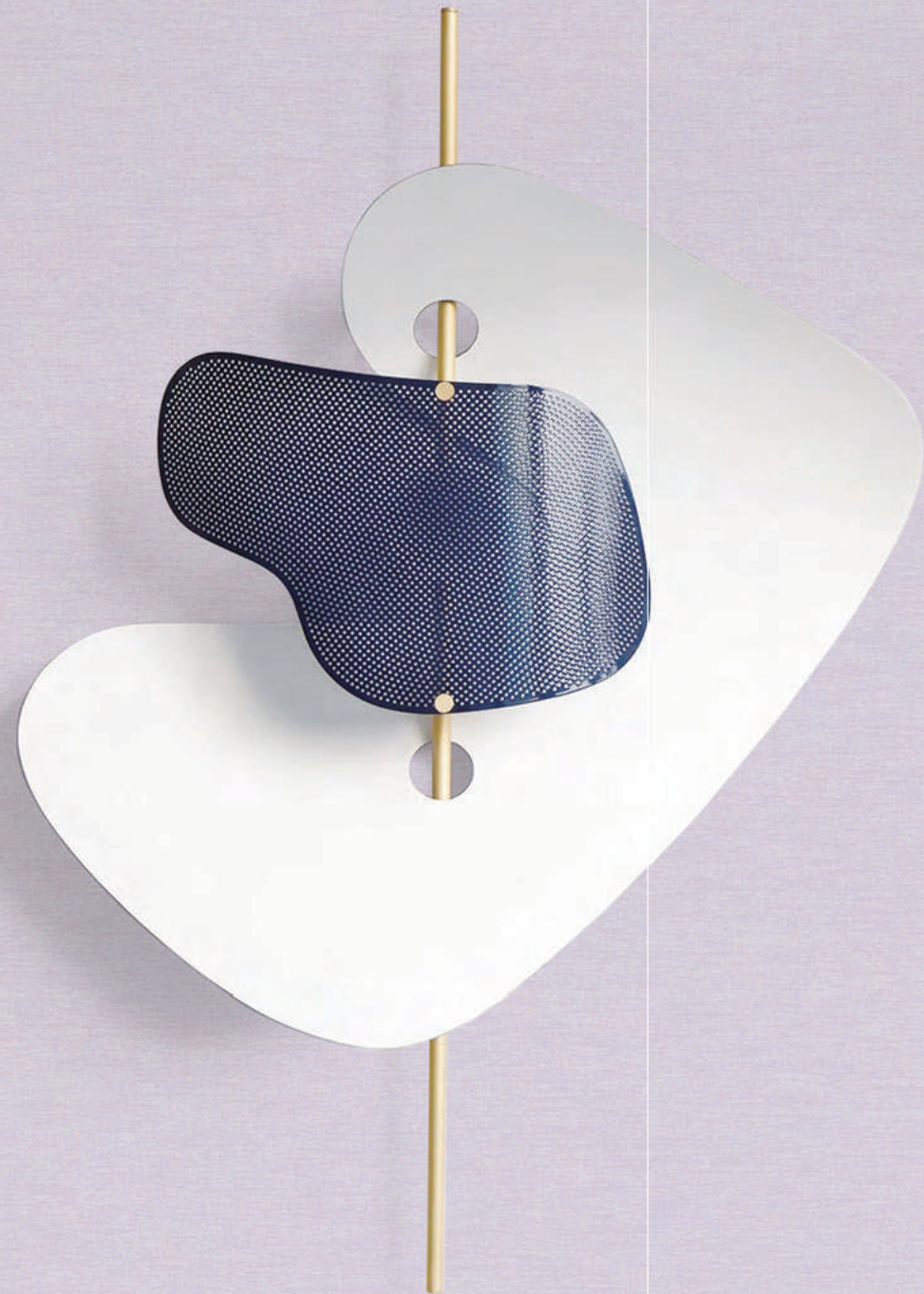
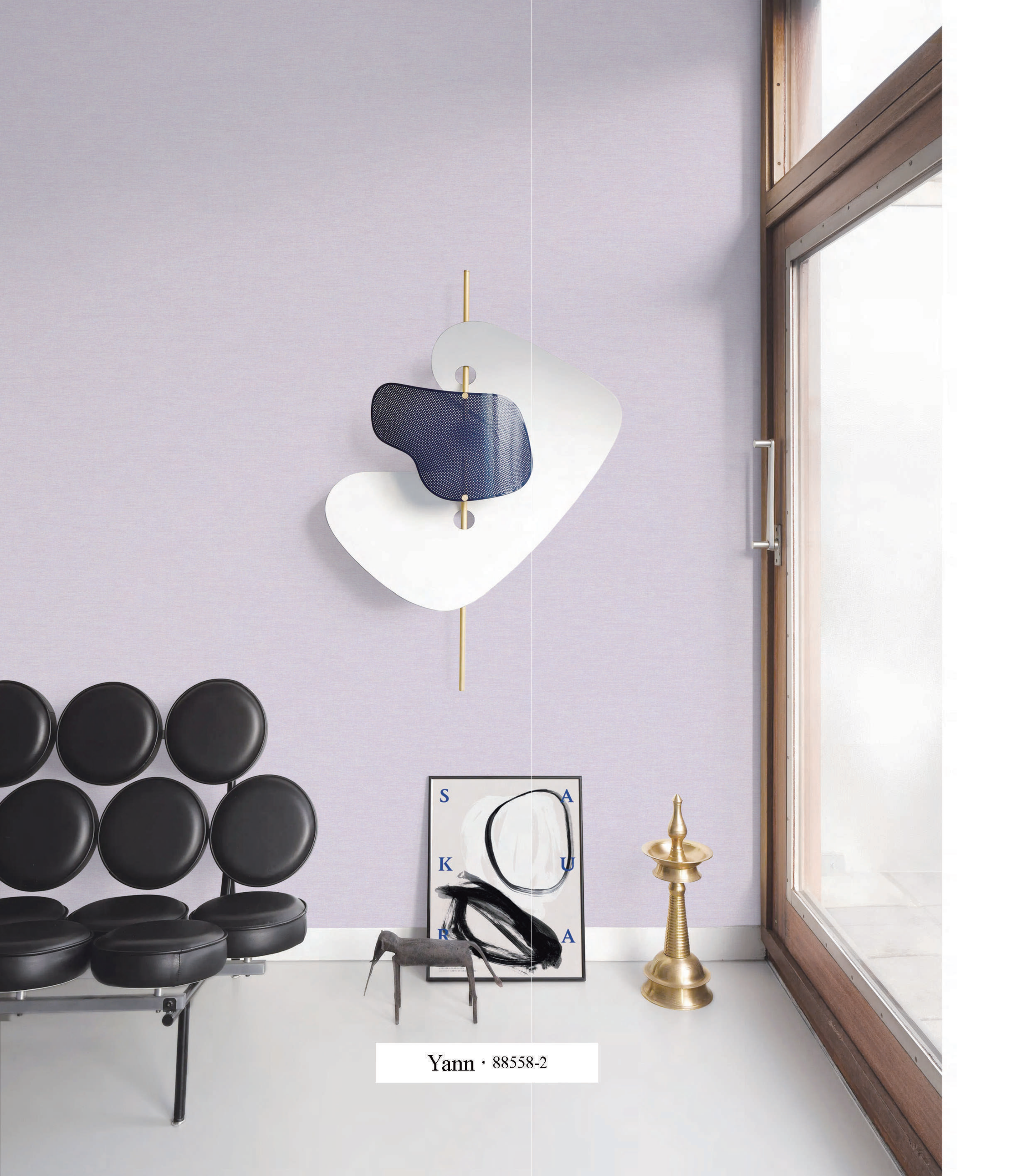


Timberwood · 88560-1



CARL MOSER  
Architektur für eine neue Zeit  
STIFTER  
WOLFF LIND MOSER

Timberwood · 88560-2



Yann · 88558-2



Floria · 88559-2



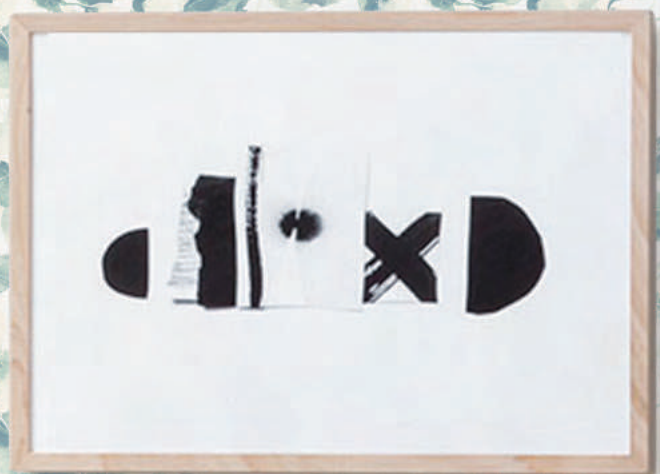
Tia · 88557-2



Dewil · 88567-4



Latina · 88556-1



Latina · 88556-3





*Zig* 88555

*We are constantly changing to create a beautiful living space for you. MODERN STYLE*



Zig · 88555-3



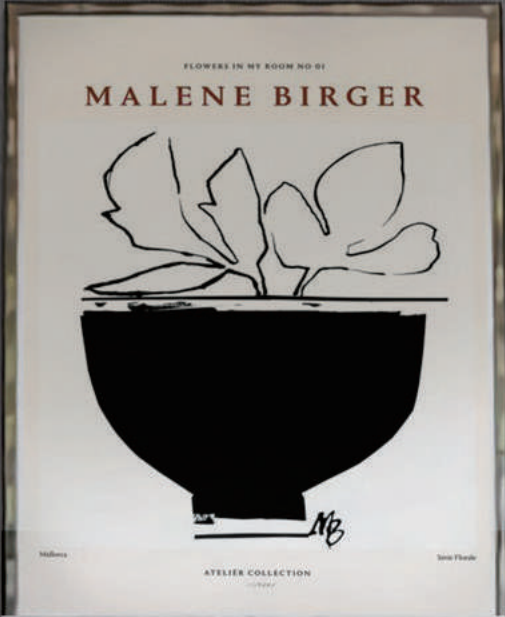
Geisel · 88554-2



Tess • 88553-2



Geisel · 88554-1



Lani · 88565-5

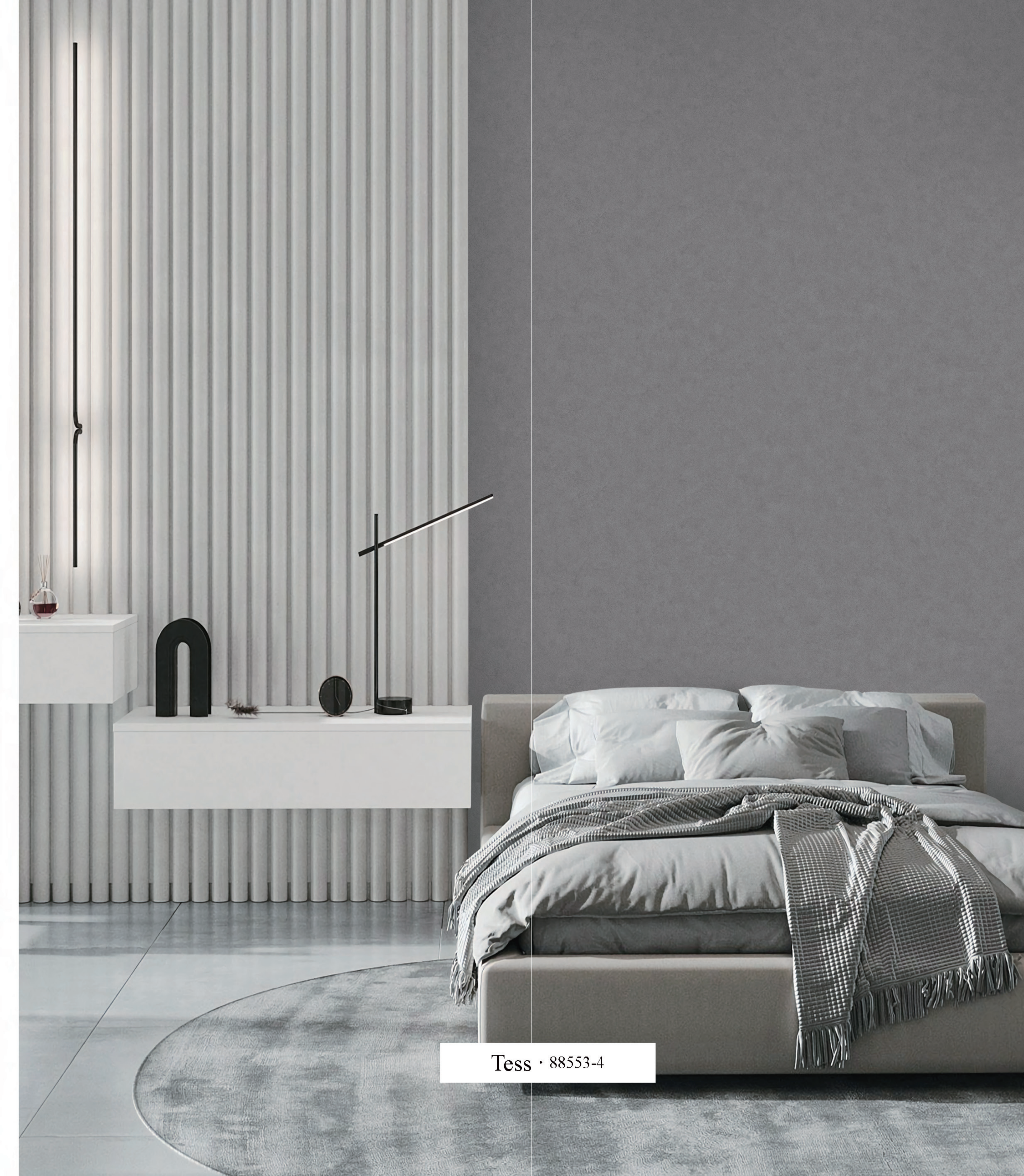


Towood · 88552-1





Towood · 88552-1



Tess · 88553-4



Vince · 88563-4



Benjerry · 88548-3



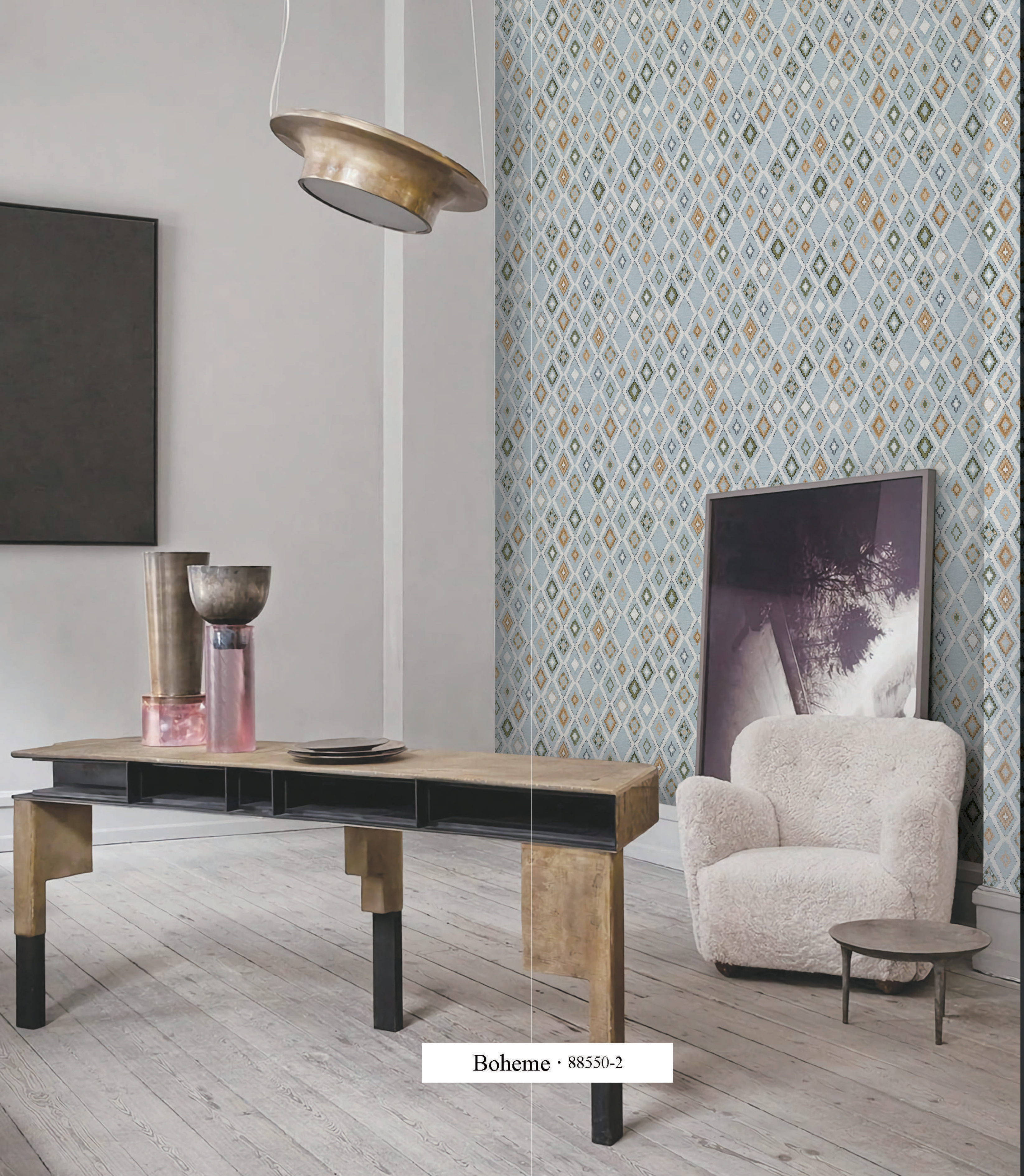
Couvreur · 88549-1



Couvreur · 88549-2



Benjerry · 88548-1



Boheme · 88550-2





Lani · 88565-1



Danube · 88547-3



Lani · 88565-3



Danube · 88547-2

# SEQUENCE COLLECTION

## PATTERN DESIGNER

YU MI PARK

EUN JI LEE

## VISUAL GRAPHIC DESIGNER

JO EUN CHOI

YE WON KANG

HAE REE PARK